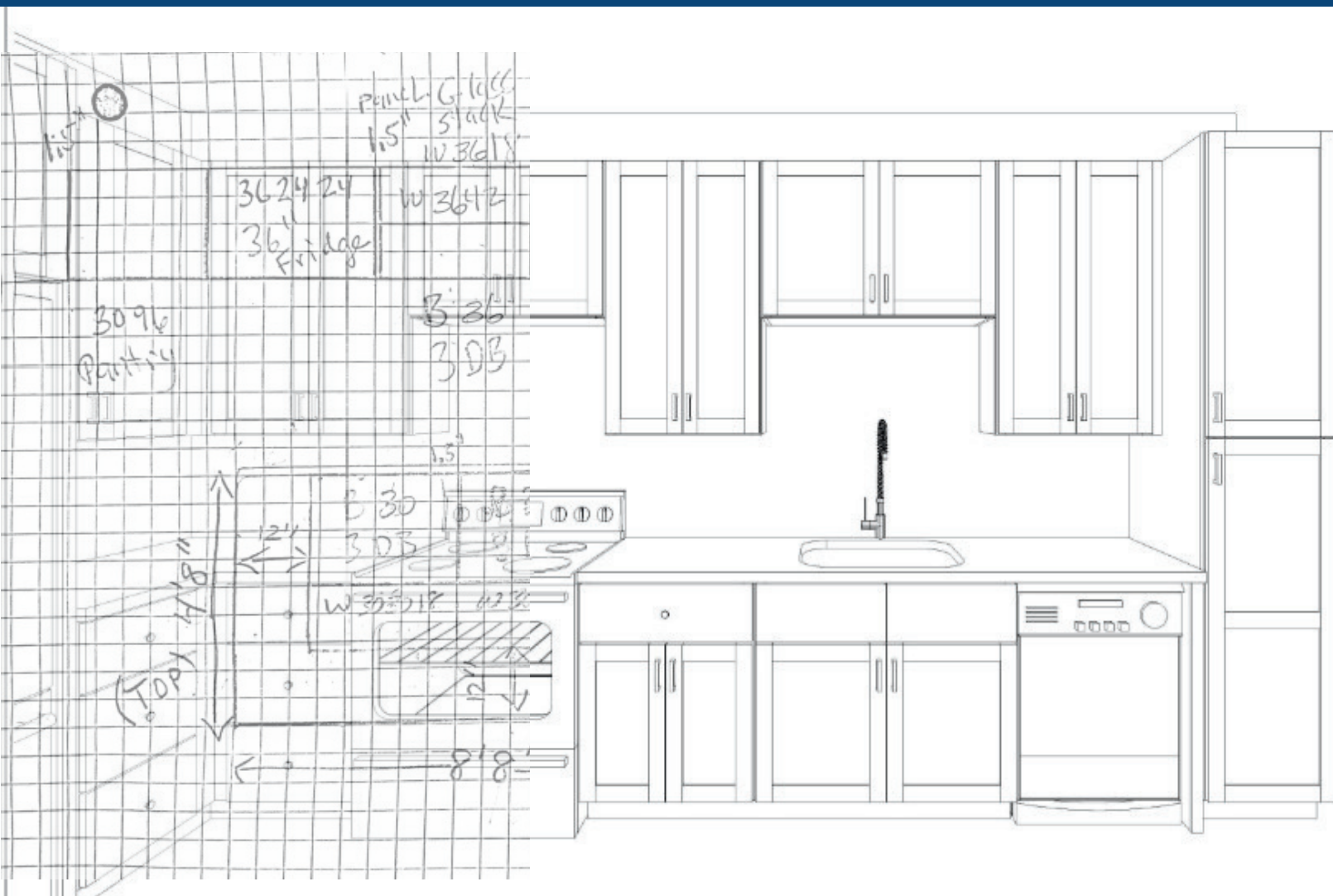


KCD DESIGN SERVICE

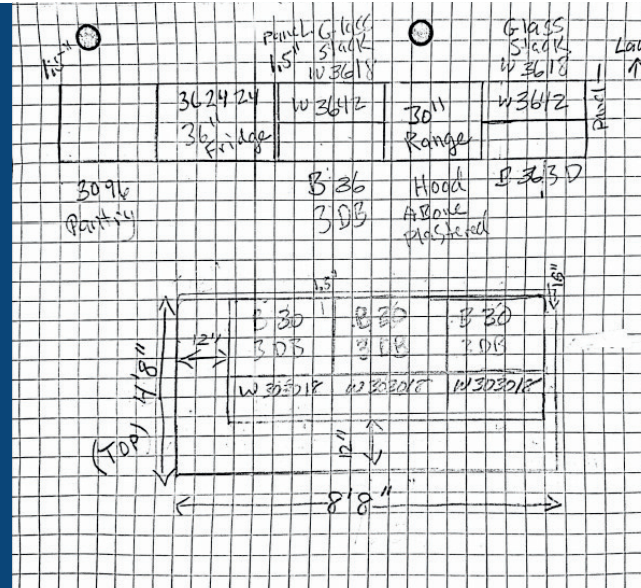
Bring your drawing to life with a professional rendering



**NEED HELP WITH YOUR DESIGN?
WE'VE GOT YOU COVERED!**

Professional Renderings

Our experienced design service team can take your vision and make it a reality. We provide high-quality renderings to impress your customers.



What We Need

We can create designs using hand-drawn layouts, competitive layouts, and construction take-offs. We simply need to know what line, what color, and what cabinets to use!

You must ensure accurate measurements and identify the location of windows, appliances, electrical, plumbing, and any other considerations in the layout.

Service Details

Design service includes:

- Multiple file types and complete 2020 rendering
- 48-hour turnaround*
- 2 design revisions**

Cost = \$125 per layout

*More complex designs may take longer

**Additional revisions available for \$25

***Color renderings available for \$25

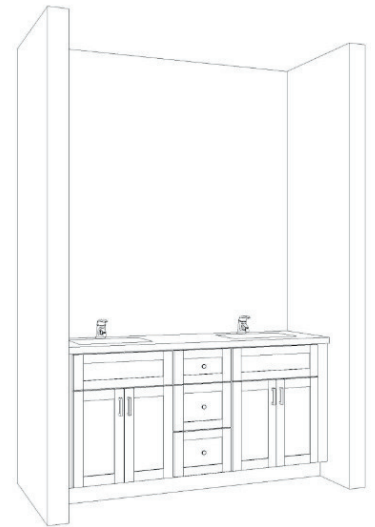
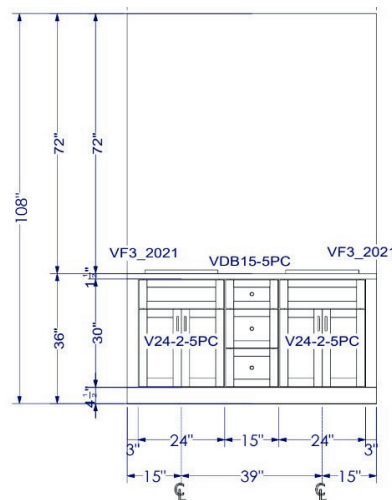
What's Included?

We will provide you with several files including:

- Black and white floorplan***
- 3-D elevation
- Complete item list
- 2020 .kit file of design

2020
A Cyncly Company

Designs will be rendered using 2020



By requesting this service, you agree that KCD assumes no liability for incorrect measurements, product selection, ordering, or installation.